

Taping specifications for Raidal Type:

Fig.1 : Code T1/R1 : Ammo / Reel Tape (Φ4 - Φ6.3)

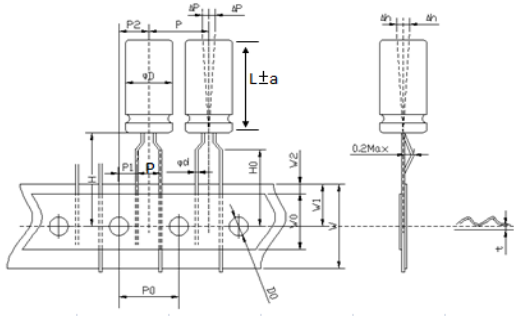


Fig.2 : Code T1/R1 : Ammo / Reel Tape (Φ8)(P3=2.0~2.7, θ=110°±15°)

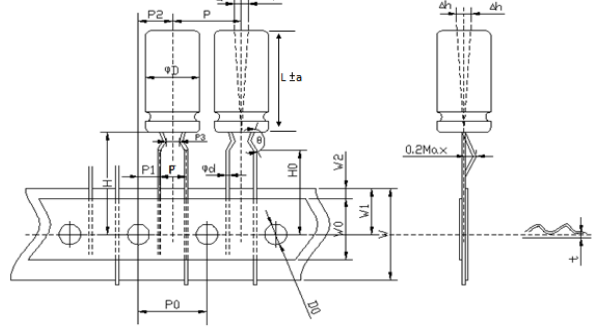


Fig.3 : Code T1/R1 : Ammo / Reel Tape (Φ10)

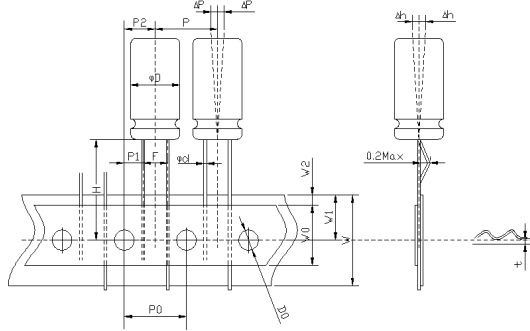


Fig.4 : Code T1 : Ammo Tape (Φ13~Φ18)

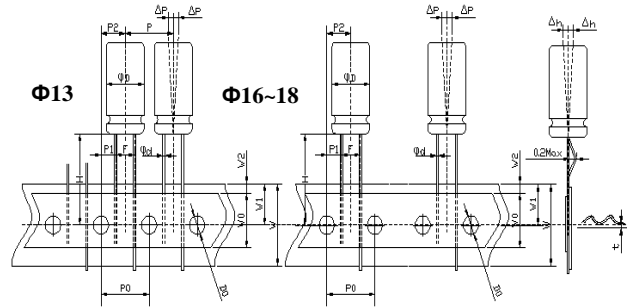


Fig.5 : Code T2/R2 , Φ4 ~ Φ8

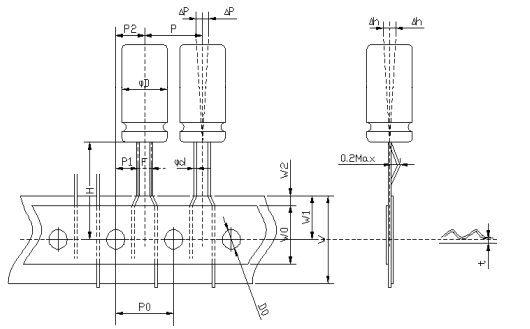
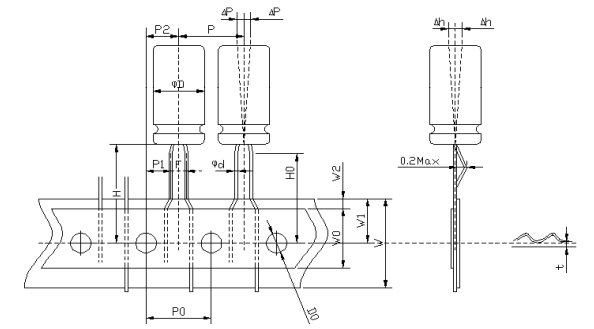


Fig.6 : Code T4/R3 : Ammo / Reel Formed Tape (Φ4~Φ5/pitch 2.5mm)



unit : mm

Code	Symbol	φ d	P	P0	P1	P2	F	W	W0	W1	W2	H	H0	D0	ΔP	Δh	t	
T1/R1	Tolerance	±0.05	±1.0	±0.3	±0.5	±1.0	+0.6/- 0.2	±0.5	min	±0.5	max	±0.5	±0.5	±0.3	max	max	±0.3	
	4x5	0.45	12.7	12.7	3.85	6.35	5.0	18.0	8.0	9.0	2.0	18.5	16.0	4.0	0.2	0.2	0.6	
	5x5~11	0.45or0.5	12.7	12.7	3.85	6.35	5.0	18.0	8.0	9.0	2.0	18.5	16.0	4.0	0.2	0.2	0.6	
	6.3x5~11	0.45or0.5	12.7	12.7	3.85	6.35	5.0	18.0	8.0	9.0	2.0	18.5	16.0	4.0	0.2	0.2	0.6	
	Tolerance	±0.05	±1.0	±0.3	±0.7	±1.0	+0.6/- 0.2	±0.5	min	±0.5	max	±0.5	±0.5	±0.3	max	max	±0.3	
	8x5~30	0.45~0.6	12.7	12.7	3.85	6.35	5	18.0	8.0	9.0	2.0	18.5	16.0	4.0	0.2	0.2	0.6	
	Tolerance	±0.05	±1.0	±0.3	±0.5	±1.0	+0.6/- 0.2	±0.5	min	±0.5	max	±0.5	—	±0.3	max	max	±0.2	
	10x10~30	0.6	12.7	12.7	3.85	6.35	5	18.0	8.0	9.0	2.0	18.5	—	4.0	0.2	0.2	0.7	
	Tolerance	±0.05	±1.0	±0.3	±0.7	±1.3	+0.6/- 0.2	±0.5	min	±0.5	max	±0.5	—	±0.3	max	max	±0.3	
	12.5x15~25	0.6	15	15	5.00	7.50	5.0	18.0	8.0	9.0	2.0	18.5	—	4.0	0.2	0.2	0.7	
13x13~40	0.6	15	15	5.00	7.50	5.0	18.0	8.0	9.0	2.0	18.5	—	4.0	0.2	0.2	0.7		
16x16~40	0.8	30	15	3.75	7.50	7.5	18.0	8.0	9.0	2.0	18.5	—	4.0	0.2	0.2	0.7		
18x20~32	0.8	30	15	3.75	7.50	7.5	18.0	8.0	9.0	2.0	18.5	—	4.0	0.2	0.2	0.7		
T2/R2	Code	Symbol	φ d	P	P0	P1	P2	F	W	W0	W1	W2	H	H0	D0	Δp	—	t
	Tolerance	±0.05	±1.0	±0.5	±0.3	±1.0	+0.6/-0.2	±0.5	min	±0.5	max	±0.5	—	±0.3	max	—	±0.2	
	4x5~7	0.45	12.7	5.6	12.7	6.35	1.5	18	8	9	3	18.5	—	4	0.2	—	0.6	
	5x5~11	0.45or0.5	12.7	5.35	12.7	6.35	2	18	8	9	3	18.5	—	4	0.2	—	0.6	
	6.3x5~11	0.45or0.5	12.7	5.1	12.7	6.35	2.5	18	8	9	3	18.5	—	4	0.2	—	0.6	
8x5~20	0.6	12.7	4.6	12.7	6.35	3.5	18	8	9	3	18.5	—	4	0.2	—	0.6		
Code	sign	φ d	P	P0	P1	P2	F	W	W0	W1	W2	H	H0	D0	ΔP	Δh	t	
	Tolerance	±0.05	±1.0	±0.3	±0.5	±1.0	+0.6/- 0.2	±0.5	min	±0.5	max	±0.5	±0.5	±0.3	max	max	±0.3	
T4/R3	4x5~4x7	0.45	12.7	12.7	5.1	6.35	2.5	18.0	8.0	9.0	2.0	18.5	17.0	4.0	0.2	0.2	0.6	
	5x5~5x11	0.45or0.5	12.7	12.7	5.1	6.35	2.5	18.0	8.0	9.0	2.0	18.5	17.0	4.0	0.2	0.2	0.6	

Cut/Formatted Lead For Radial Lead Type :

Shape	Suitable size	Shape	Suitable size
<p>Code C5 : Straight Cut</p>	ΦD=4~18	<p>Code K2 : Kink cut, & Crimping</p>	ΦD=4~18
<p>CodeF* : Molding Truncation type</p>	ΦD=4~8	<p>CodeV* : Horizontal processing</p>	ΦD=4~18

unit : mm

C	Code	1	2	3	4	5	6	7	8	9	A	B	C	D	E	F	G	H
	L	2.5	2.8	3.2	3.4	4.0	4.5	5.0	5.5	6.5	7.0	8.0	10.0	3.6	6.0	3.2	4.2	2.4
	Code	J	K	L	M	N	P	Q	R	S	T	U	V	X	Y	Z	W	
	L	4.2	3.7	12.0	2.0	2.2	2.5	13.5	9.0	20.0	16.0	18.0	3.0	13.0	12.5	15.0	3.1	

K	Code	1	2	3	4	5	6	7	9
	L	3.2	4.5	5.0	3.5	4.0	4.3	3.5	3.2
	Code	A	B	E	D	F	H	K	L
	L	3.3	3.6	3.6	3.3	18.0	7.0	6.8	4.0

F	Code	1	2	3	4	5	6	7	8	9	A	B	C	D	E	F	G	H
	L	3.0	3.1	3.2	3.4	3.5	4.0	4.8	4.5	3.2	6.0	4.3	5.0	3.0	3.6	5.0	3.0	6.5
	Code	J	K	L	M	N	O	P	Q	R	S	T	U	V	W	Z	I	
	L	3.7	2.5	2.2	1.5	2.9	3.7	7.0	4.2	9.0	2.8	3.7	2.4	4.0	3.1	4.5	4.0	

V	Procesn umber	1	2	6	J	Q	F	8	N
	L1	1.25±0.25	2.5±0.5	2.5±0.25	1.0±0.5	1.5±0.5	1.25±0.25	2.0±0.5	2.2±0.5
	L2	2.6±0.3	3.5±0.5	4.1±0.5	3.85±0.25	3.0±0.5	11.5±0.5	4.0±0.5	<3.6
	Procesn umber	5	P	3	Y	R	G	9	Z
	L1	2.5±0.25	5.0±0.5	2.5±0.25	1.0±0.5	1.5±0.5	1.0±0.2	2.0±0.5	2.2±0.5
	L2	3.25±0.25	3.25±0.25	4.1±0.5	3.85±0.25	3.0±0.5	2.4±0.3	4.0±0.5	<3.6
	Procesn umber	B	S	U	H	D	O	E	M
	L1	2.5±0.5	2.0±0.5	3.5±0.3	1.0±0.2	2.0±0.5	2.5±0.5	1.5±0.2	3.3±0.2
	L2	3.3±0.5	3.5±0.3	5.0 +0,-0.5	2.4±0.3	6.7±0.5	7.0±0.5	2.25±0.25	3.25±0.25
	Procesn umber	X	W	V	7	C	A	4(Don't cut the foot.)	T
	L1	2.5±0.5	2.0±0.5	1.0±0.5	2.0±0.5	<1.6(containφd)	2.5±0.3	4.0±0.5	<2.0
	L2	5.8±0.5	2.5±0.5	3.5±0.3	3.2±0.4	2.0±0.5	3.7±0.3	15.5±0.5	9.3±0.5

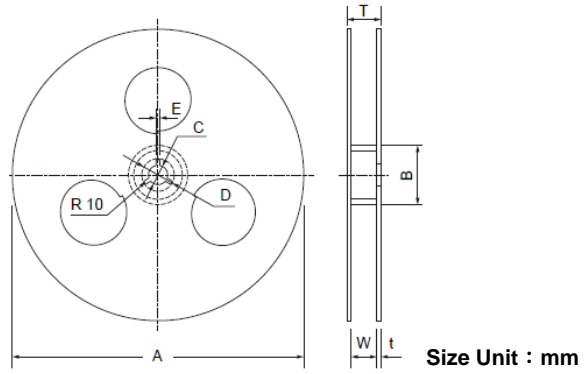
Note: if the above size can not satisfied your need please contact us.

Available Terminals For SNAP-IN Type :

<p>standard product code: S1(the NO.13 code is G) apply to size $\phi 22 \sim \phi 35$</p> <p>Hole of PCB</p>	<p>code: LL apply to size $\phi 30 \sim \phi 40$</p> <p>Hole of PCB (one side of soldering)</p>
<p>three terminal code: L3 apply to size $\phi 30, \phi 35$</p> <p>Hole of PCB (one side of soldering)</p>	<p>Horizontal code: V3 apply to size $\phi 22 \sim \phi 25$</p> <p>Hole of PCB (one side of soldering)</p>
<p>four terminal code: L4 apply to size $\phi 35 \sim \phi 40$</p> <p>Hole of PCB (one side of soldering)</p>	

Packaging Specification

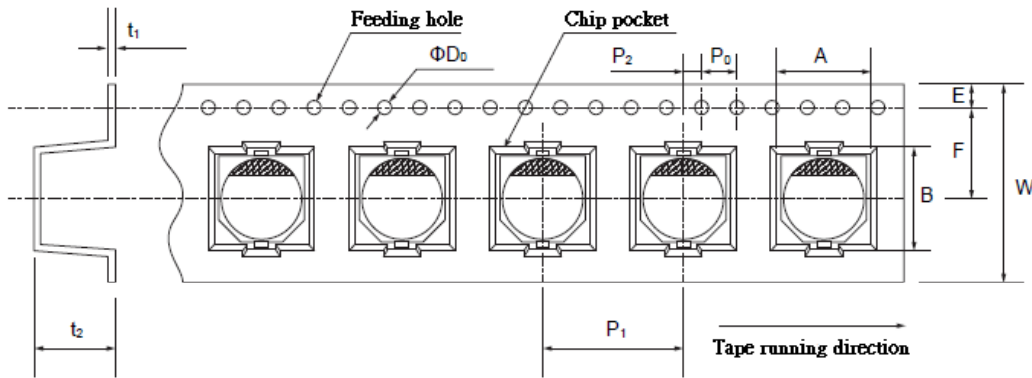
1.SMD Packing Specification



Size Unit : mm

Size	A	B	C	D	E	W	T	t
4Φ ~ 5Φ	380±2	84min	13.0±0.5	42	2.0±0.5	14±1	18±1	2.0
6.3Φ ~ 8×6.7	380±2	84min	13.0±0.5	42	2.0±0.5	18±1	22±1	2.0
8×10.2 ~ 10Φ	380±2	84min	13.0±0.5	42	2.0±0.5	26±1	30±1	2.0
12.5Φ	380±2	84min	13.0±0.5	42	2.0±0.5	32±1	36±1	2.0
16.0Φ	380±2	84min	13.0±0.5	42	2.0±0.5	44±1	48±1	2.0

① Reel Tape



Size Unit : mm

Symbol SizeDxL	W	A	B	Po±0.1	P1	P2±0.1	F	ΦD ₀	t1	E	t2
4x5.4	12.0	4.7	4.7	4.0	8.0	2.0	5.5	1.5+0.1-0	0.4	1.75	5.8
5x5.4(5.8*)	12.0	5.7	5.7	4.0	12.0	2.0	5.5	1.5+0.1-0	0.4	1.75	5.8
6.3x5.4(5.8*)	16.0	7.0	7.0	4.0	12.0	2.0	7.5	1.5+0.1-0	0.4	1.75	5.8
6.3x7.7*	16.0	7.0	7.0	4.0	12.0	2.0	7.5	1.5+0.1-0	0.4	1.75	8.3
8x6.2	16.0	8.7	8.7	4.0	12.0	2.0	7.5	1.5+0.1-0	0.4	1.75	6.8
8x10.2(10.4*)	24.0	8.7	8.7	4.0	16.0	2.0	11.5	1.5+0.1-0	0.4	1.75	11.0
10x10.2*(12.2*)	24.0	10.7	10.7	4.0	16.0	2.0	11.5	1.5+0.1-0	0.4	1.75	11.0
12.5x13.5	32.0	13.4	13.4	4.0	24.0	2.0	14.2	1.5+0.1-0	0.4	1.75	14.0
12.5x16.0	32.0	13.4	13.4	4.0	24.0	2.0	14.2	1.5+0.1-0	0.4	1.75	16.2
16.0x16.5	44.0	17.5	17.5	4.0	28.0	2.0	20.2	1.5+0.1-0	0.4	1.75	16.7

② Packaging Specification

Size DxL(mm)	Q'ty per (pcs)	Inner box (pcs)	Measurement (mm)	gross (kg)	Outer carton (pcs)	Measurement (mm)	gross (kg)
4x5.4	2000	20,000	390x195x395	4	40,000	420x410x414	9
5x5.4(5.8*)	1000	10,000	390x195x395	5	20,000	420x410x414	11
6.3x5.4 (5.8*)	1000	10,000	390x235x405	5	20,000	420x410x492	12
6.3x7.7*	1000	10,000	390x235x405	7	20,000	420x410x492	14
8x6.2	1000	10,000	390x235x405	7	20,000	420x410x492	15
8x10.2(10.4*)	500	4,000	390x255x405	6	8,000	420x410x530	13
10x10.2*(12.2*)	500	4,000	390x255x405	8	8,000	420x410x530	17
12.5x13.5	200	1,200	390x255x405	5	2,400	420x410x530	13
12.5x16.0	150	900	390x255x405	5	1,800	420x410x530	13
16.0x16.5	125	625	390x255x405	5	1,250	420x410x530	13

Note: product size don't marked with "*" mark is an applicable polymer solid aluminium electrolytic capacitor.

More detailed information please contact our company.

Packaging Specification

2. Conductive Polymer Aluminum Solid Capacitors

① Bulk package : Standard

Classification	Standard			
size ΦDxL(mm)	Vinyl bag Qty (pcs)	Inner box (pcs)	Outer carton (pcs)	gross weight (kg)
5×7,5×9,6.3×5.4	2,000	16,000	32,000	11
5.5×9,6.3×6.3×8	1,000	12,000	24,000	10
6.3×10.5	1,000	10,000	20,000	14
8x8,8x9,8x11.5	500	7,500	15,000	17
10×12.5	200	4,000	8,000	15

② Bulk package : Cutting & Forming

Classification	Cutting & Forming			
size ΦDxL(mm)	Vinyl bag Qty (pcs)	Inner box (pcs)	Outer carton (pcs)	gross weight (kg)
5×7,5×9,6.3×5.4	2,000	10,000	40,000	16
5.5×9,6.3×6.3×8	2,000	10,000	40,000	15
6.3×10.5	1,000	7,000	28,000	17
8x8,8x9	500	4,000	16,000	18
8x11.5	500	4,000	16,000	18
10×12.5	200	2,000	8,000	15

③ Ammo Tape(Fig.1)

Classification	Ammo Tape				
size ΦDxL(mm)	Inner box (pcs)	Outer carton (pcs)	Outer carton (mm)	Outer carton (pcs)	gross weight (kg)
6.3Φ	340×275×50	2,000	355×297×290	10,000	8
8Φ×5-16L	340×230×50	1,000	355×252×290	5,000	7
10Φ×10~17L	340×230×50	600	355×252×290	3,000	7

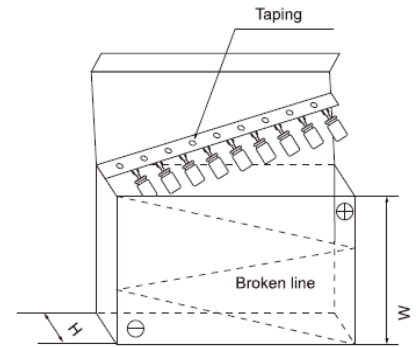


Fig.1

④ Reel Tape(Fig.2)

Classification	Roll Reel braid		
size ΦDxL(mm)	Inner box (pcs)	Outer carton (pcs)	gross weight (kg)
6.3Φ	2,000	10,000	6
8Φ×5-16L	1,600	8,000	12
10Φ×10~17L	1,000	5,000	14

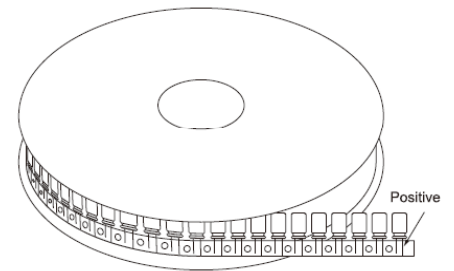


Fig.2

3. Radial Lead Type Aluminium Electrolytic Capacitors

① Bulk package : Standard

Standard					Standard				
Classification	Vinyl bag Qty	Inner box	Outer carton	gross weight	Classification	Vinyl bag Qty	Inner box	Outer carton	gross weight
size DxL(mm)	(pcs)	(pcs)	(pcs)	(kg)	size DxL(mm)	(pcs)	(pcs)	(pcs)	(kg)
4×5	2,000	24,000	48,000	13	13×13,13×15	100	2,400	4,800	15
4×7	2,000	20,000	40,000	11	13×18,13×20	100	1,800	3,600	15
5×5	2,000	20,000	40,000	12	13×25	100	1,200	2,400	14
5×7	2,000	16,000	32,000	13	13×30	100	1,200	2,400	16
5×11	1,000	12,000	24,000	13	13×34,13×36	100	1,000	2,000	14
6.3×5	2,000	16,000	32,000	11	13×38,13×40	100	800	1,600	15
6.3×7	2,000	12,000	24,000	10	16X15,16X20	100	1000	2000	22
6.3×11	1,000	10,000	20,000	14	16X25	100	1000	2000	24
8x7	500	10,000	20,000	14	16X30,16X32	100	800	1600	20
8×9,8×11	500	7,500	15,000	17	16X36,16X40	100	600	1200	22
8×14	500	5,000	10,000	12	16X45	100	500	1000	22
8×16	500	5,000	10,000	16	18X15,18X20	100	800	1600	21
8×20	200	4,000	8,000	14	18X22,18X25	100	800	1600	23
10×12.5	200	4,000	8,000	15	18X30	100	600	1200	25
10×15	200	3,600	7,200	16	18X32,18X36,18X40	100	500	1000	25
10×17	200	3,600	7,200	17	18X45,18X50	100	300	600	21
10×20	200	3,000	6,000	19	22X35,22X40	100	300	600	21
10×25	200	2,400	4,800	17					

② Bulk package : Cutting & Forming

Classification		Cutting & Forming				Classification		Cutting & Forming			
size ΦDxL(mm)	Vinyl bag Qty (pcs)	Inner box (pcs)	Outer carton (pcs)	gross weight (kg)	size ΦDxL(mm)	Vinyl bag Qty (pcs)	Inner box (pcs)	Outer carton (pcs)	gross weight (kg)		
4×5	2,000	20,000	80,000	20	13×13,13×15	200	800	3,200	13		
4×7	2,000	16,000	64,000	17	13×18,13×20	200	600	2,400	10		
5×5	2,000	16,000	64,000	18	13×25	200	600	2,400	14		
5×7	2,000	16,000	64,000	23	13×30	100	500	2,000	14		
5×11	1,000	10,000	40,000	22	13×34,13×36	100	300	1,200	12		
6.3×5	2,000	10,000	40,000	16	13×38,13×40	100	300	1,200	15		
6.3×7	2,000	10,000	40,000	15	16X15,16X20	200	1000	2000	22		
6.3×11	1,000	7,000	28,000	17	16X25	-	500	4000	44		
8x7	500	6,500	26,000	16	16X30,16X32	-	500	3000	37		
8×9,8×11	500	4,000	16,000	18	16X36,16X40	-	500	3000	55		
8×14	500	3,000	12,000	14	18X22,18X25	-	500	2000	28		
8×16	500	2,000	8,000	13	18X32,18X36,18X40	-	500	1000	25		
8×20	200	2,000	8,000	14	18X45,18X50	-	600	1200	40		
10×12.5	200	2,000	8,000	15	20X25	-	400	800	20		
10×15	200	2,000	8,000	18	22X32	-	320	1920	55		
10×17	200	1,600	6,400	15	22X30	-	400	800	25		
10×20	200	1,400	5,600	17	22X35,22X40	-	400	800	27		
10×25	200	1,200	4,800	16							

③ For lattice bar type packing of standard(Fig.3)

size ΦDxL(mm)	Lattice bar of inner carton		Row packing method		Inner box Qty (pcs)	Outer carton (pcs)	gross weight (kg)
	Height (mm)	Qty (pcs)	Row number Layer number	Each row (pcs)			
11.7X26	60	38	20*2	25	1000	2000	9
13x16~13x20	55	18	10*2	25	500	2000	10
16X15-20 L	55	18	10*2	25	500	1000	11
16X21-26 L	60	18	10*2	25	500	1000	12
16X27-32 L	65	18	10*2	25	500	1000	13
16X33-40 L	75	18	10*2	25	500	1000	14
18X15-16 L	50	18	10*2	25	500	1000	12
18X17-26 L	60	18	10*2	25	500	1000	13
18X27-32 L	65	11	12*1	25	300	600	13
18X33-42 L	75	11	12*1	25	300	600	13
18X43-50 L	85	11	12*1	25	300	600	14
20x30-40L	75	9	10*1	20	200	400	13
22x30-40L	75	9	10*1	20	200	400	15
22x41-50L	85	9	10*1	20	200	400	17
25x40-50L	85	9	10*1	20	200	400	19

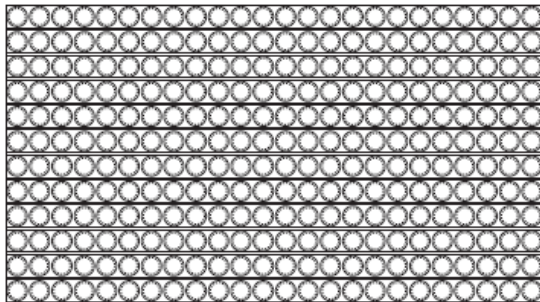


Fig.3

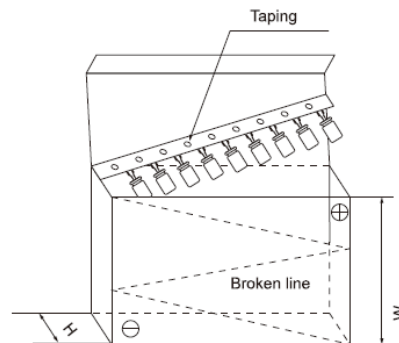


Fig.4

④ For Taping Ammo & Reel(Fig.4)

Classification	Ammo Tape				
size ΦDxL(mm)	inner box (mm)	quantity (pcs/box)	outer carton (mm)	quantity (pcs/box)	gross weight (kg/box)
4Φ	330×275×50	3,000	345×290×278	15,000	6
5Φ	330×230×50	2,000	345×248×280	10,000	6 ~ 7
6.3Φ	330×275×50	2,000	345×290×278	10,000	8
8Φ×5-16L	330×230×50	1,000	345×248×280	5,000	7
8Φ×20L	330×230×58	1,000	345×245×320	5,000	7
10Φ×10~17L	330×230×50	600	345×248×280	3,000	7
10Φ×20~25L	330×230×58	600	345×245×320	3,000	7
10Φ×30L	330×230×65	600	345×245×290	2,400	7
13Φ×32L below	335×235×65	400	352×248×290	1,600	5
13Φ×36L below	335×235×74	400	352×248×325	1,600	5
16Φ×32L below	335×275×65	300	355×297×290	1,200	5
16Φ×36L below	335×275×74	300	355×297×337	1,200	5
18Φ×20~32L below	340×288×63	260	360×305×280	1,040	5

⑤ Roll Reel braid(Fig.5)

Classification size ΦDxL(mm)	Ammo Tape				
	inner box (mm)	quantity (pcs/box)	outer carton (mm)	quantity (pcs/box)	gross weight (kg/box)
4Φ	350*350*110	3,000	370*370*675	15,000	8
5Φ		2,400		12,000	8
6.3Φ		2,000		10,000	6
8Φ×5-16L		1,600		8,000	12
8Φ×20L		1,000		5,000	12
10Φ×10-16L		1,200		6,000	
10Φ×17-20L		1,000		5,000	

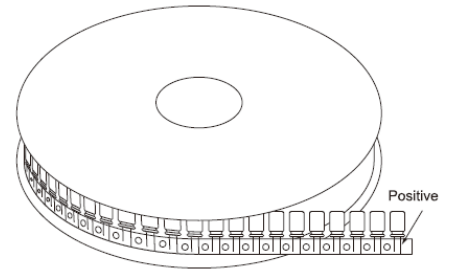


Fig.5

4. SNAP-IN Type Aluminium Electrolytic Capacitors(Fig.6)

size ΦDxL(mm)	weighe (g/pcs)	inner box (pcs)	outer carton (pcs)
22×25 ~ 30	20 ~ 25	300	1200
22×35 ~ 50	25 ~ 30	200	800
25×25 ~ 30	25 ~ 30	240	960
25×35 ~ 50	30 ~ 35	160	640
30×20 ~ 30	30 ~ 35	135	540
30×35 ~ 50	35 ~ 40	90	360
30 x 70	45~50	80	320
35×25 ~ 30	40 ~ 45	105	420
35×35 ~ 50	45 ~ 50	70	280

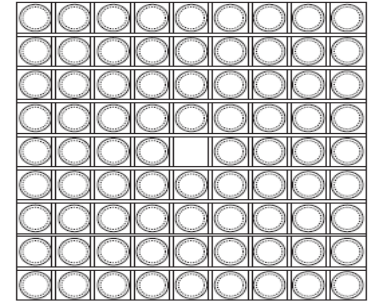


Fig.6

5. SCREW Type Aluminium Electrolytic Capacitors(Fig.7)

size ΦDxL(mm)	inner box (pcs)	outer carton (pcs)
35×50~90High	28	112
35×100~121	28	56
51×70~96	15	60
51×100~130	15	30
64×96~195	8	16
77×96~195	6	12
90*131~196	4	8
90×236		6

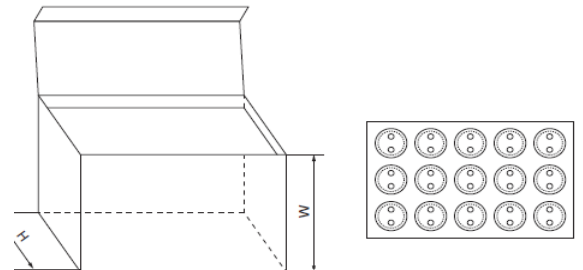


Fig.7